

# RIGHT ANGLE WEAVE NET STITCH

The basic concept of right angle weave (RAW) net is to build four-sided net holes at right angles to each other. The number and placement of the beads on the sides of these net holes will determine the shape and size of the RAW netting. If all four sides have the same number of beads or if the top and bottom have the same number of beads and the sides have the same number of beads, the netting will have a square or rectangular shape. If the top and bottom have different number of beads the netting will be cone-shaped.

**Warning:** The right and left sides of each net hole must have the same number of beads for the entire row. If the side beads do not have same number of beads the netting will be skewed.

Figure 1 shows some different sizes of net holes.

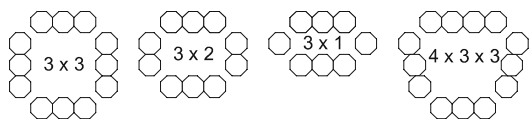


Fig. 1

## Creating flat RAW netting

Although the RAW netting can be attached to a beaded foundation to create a amulet bag, I feel it is easier to learn the flat RAW netting first. The flat RAW netting is used in the straps in the "Flower and Lace" pattern.

**Warning:** The RAW netting is worked in a Figure-8 pattern. The direction you are going will vary and might not match the illustrations shown in these instructions.

### Creating the first row of flat RAW netting

1. Pick up all the beads for the first net hole (for the sample this will be 12 beads for a 3 x 3 net hole).
2. Bring the needle back through the beads for the first three sides (nine beads in the sample).

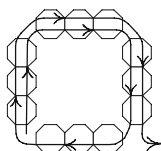


Fig. 2

3. Pull the thread taut so they form a square as shown in Figure 2. Notice that the thread will be extending from the bottom of the

side bead (in the diagram it is the right side, but if you are left handed it will be the left side).

4. Pick up the beads to complete the next net hole (nine beads in the sample) (Fig. 3).

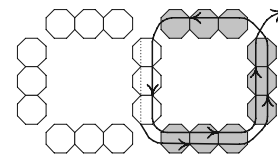


Fig. 3

5. Bring the needle back through the side beads (3) of the previous net hole going from the top to the bottom and through the first two sides of the newly added beads (6 beads) of the current net hole. Notice that the thread will be extending from the top of the new net hole.

6. Pick up nine beads for the next net hole (Fig. 4).

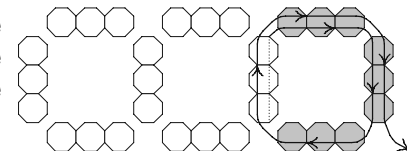


Fig. 4

7. Bring the needle back through the three side beads of the previous net hole going from the bottom to the top and through the first six newly added beads of the current net hole. Notice that the thread will be extending from the side of the new net hole.

9. Repeat Steps 4 through 7 until the netting is the desired width.

### Creating additional rows of flat RAW netting

1. Bring the needle through the beads at the bottom of the current net hole.
2. Pick up the beads for the sides and the bottom for the first net hole of the next row. (In the sample, that would be nine beads).

3. Bring the needle through the bottom beads of the net hole on the previous row and then down the newly added side beads (three beads in the sample) (Fig. 5).

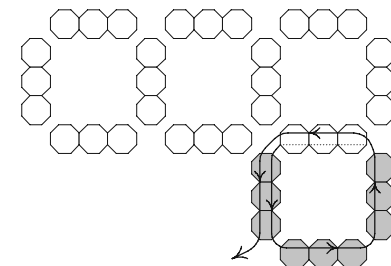


Fig. 5

- Pick up bottom and side beads (six beads in the sample) of the next net hole (Fig. 6).

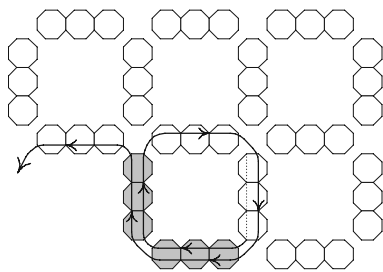


Fig. 6

- Bring the needle through the bottom beads of the corresponding net hole of the previous row and the side beads of the previous net hole.

- Bring the needle through the newly added beads and the bottom beads of the net hole of the previous row.

- Pick up side and bottom beads (six beads) of the next net hole (Fig. 7).

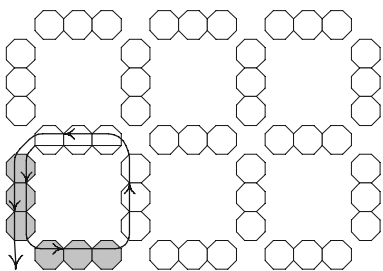


Fig. 7

- Bring the needle through the side beads of the previous net hole and the bottom beads of the corresponding net hole of the previous row.

- Bring the needle down the newly added side beads.

- Repeat Steps 4 through 9 until the row is completed.

From this point on you will add each additional row in the same manner.

**Warning:** Be sure to follow the pattern carefully when doing the RAW netting. The order the beads in the pattern are picked up depends on where the thread is extending from on the current net hole. Remember, the RAW netting is worked in a Figure 8 pattern. The thread should never cross the space created where the corners of the net holes come together. Figure 8 shows what the space at a four-corner connection should look like when done correctly and incorrectly.

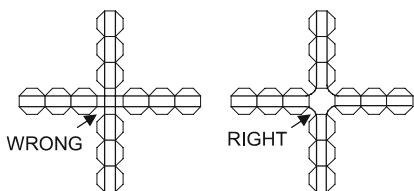


Fig. 8

## Creating tubular RAW netting

The RAW netting can also be used in a tubular fashion to form an amulet bag.

### Creating the first row of tubular RAW netting

Start the tubular RAW netting the same way as the flat RAW netting with the following exceptions:

- Complete all but the LAST net hole. (After the first net hole you will be picking up the beads for the top, side and bottom for each net hole).

- With the thread extending from the side bead of the current net hole (in Figure 9, the thread is extending from the bottom), pick up the beads for the bottom of the next net hole (three beads in the sample).

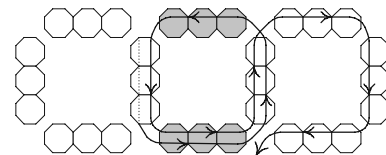


Fig. 9

- Bring the needle up through the side beads of the first net hole, going from the bottom to the top.

- Pick up the beads for the top of the current net hole.

- Bring the needle down through the side beads of the previous net hole, going from the top to the bottom.

- Bring the needle through the newly added beads at the bottom of the current net hole and up through the side beads of the first net hole.

- To secure the row, bring the needle through the top, side, and bottom beads of the first net hole. This positions the needle for the next row.

### Creating additional rows of tubular RAW netting

Additional rows for the tubular RAW netting are added the same way as the flat RAW netting with the following exceptions:

- All but the LAST net hole is worked exactly the same as the flat RAW netting.

- On the last net hole only the bottom beads will be added. This last net hole will use the side beads of the first net hole and the current net hole and the bottom beads of the corresponding net hole on the previous row.

In Figure 10, the thread is extending from the side beads at the top of the just completed net hole. To complete the last net hole, bring the needle through the bottom bead of the corresponding net hole on the previous

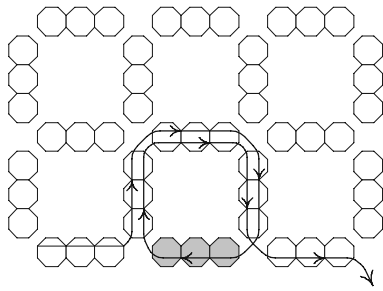


Fig. 10

row, down the side bead of the first net hole of the current row. Pick up the bottom beads (three beads in the sample) and bring the thread back up through the side beads of the previous net hole, through the bottom beads of the corresponding net hole on the previous row, down the side bead of the first net hole of the current row and, finally, through the bottom beads of the first net hole of the current row. The thread is now positioned to start another row.

**Warning:** *The thread path could be different depending on the direction you work the RAW netting.* If the thread is extending from the bottom of the side beads of the current net hole, pick up the bottom beads of the net hole, go up the side beads of the first net hole, through the bottom beads of the corresponding net hole of the previous row, down the side beads of the previous net hole, through the newly added bottom beads, and finally the side, top, side and bottom beads of the first net hole. See Figure 11 below.

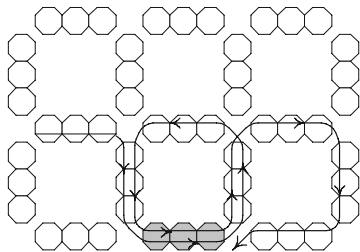


Fig. 11

### **Attaching tubular RAW netting to a peyote stitch beaded foundation**

If the RAW netting is going to be attached to the outside of the peyote beaded foundation the pattern should be designed to incorporate the netting. If the netting is going to be attached to the inside of the beaded foundation it is not necessary to incorporate the netting into the pattern. However, the pattern must be designed so the netting can be attached evenly around the bag. There should be an even number of connector beads on the peyote beaded foundation.

1. Complete the peyote beaded foundation per the instructions.

2. With the needle extending from what will be a connector bead (indicated with a dot in the middle) on the peyote beaded foundation pick up the side, bottom, and side beads of the first net hole. In the sample shown in Figure 12 that would be 12 beads.

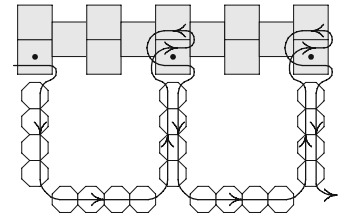


Fig. 12

3. Bring the needle through the next connector bead on the peyote beaded foundation. To reinforce the netting and to prevent it from slipping, bring the needle through the bead directly above the connector bead on the peyote beaded foundation, then bring the needle back through the connector bead being sure it is pointing in the direction you are working.

4. Bring the needle through the closest side beads just added (four beads in the sample) and pick up the bottom and side beads of the next net hole (eight beads in the sample).

5. Repeat Steps 3 and 4 until all but the last net hole has been attached.

6. On the last net hole you will pick up only the bottom beads. With the needle extending from the bottom of the

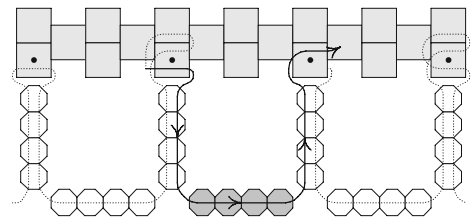


Fig. 13

side beads of the current net hole, pick up the bottom beads for the last net hole and bring the needle up (from the bottom) the side beads of the first net hole and into the first connector bead on the peyote beaded foundation (Fig. 13).

All the rest of the rows are worked the same as for the tubular RAW netting (see instruction for **Creating additional rows of the tubular RAW netting**).

### **Attaching netting to a brick stitch beaded foundation**

If the RAW netting is going to be attached to the outside of the brick stitch beaded foundation, the pattern should be designed to incorporate the netting. If the netting is

going to be attached to the inside of the beaded foundation it is not necessary to incorporate the netting into the pattern. However, the pattern must be designed so an even number of net holes can be attached evenly around the bag. **It takes two beads to attach the RAW netting to the brick stitch beaded foundation.**

1. Complete the brick stitch beaded foundation per the pattern instructions.

2. With the needle extending from the bottom of what will be the second of two connector beads on the brick stitch beaded foundation, pick up the side, bottom, and side

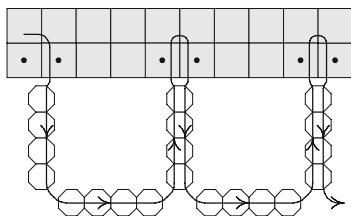


Fig. 14

beads of the first net hole. In the sample shown in Figure 14 that would be 12 beads.

3. Bring the needle up through the first of the next two connector beads (from the bottom) on the brick stitch beaded foundation and then go down (from the top) the next bead on the same row of the brick stitch beaded foundation.

4. Bring the needle through the closest side beads of the current net hole (four beads in the sample) and pick up the bottom and side beads of the next net hole (eight beads in the sample).

5. Repeat Steps 3 and 4 until all but the last net hole has been attached.

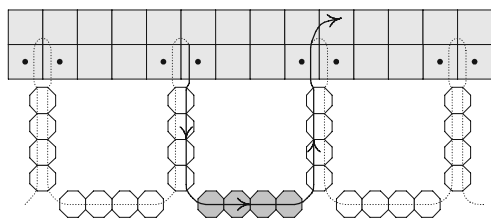


Fig. 15

6. On the last net hole you will pick up only the bottom beads. With the needle extending from the bottom of the side beads of the current net hole, pick up the bottom beads for the last net hole, and bring the needle up the side beads of the first net hole and into the first connector bead on the brick stitch beaded foundation which completes the two-bead connector bead for the first net hole.(Fig. 15).

All the rest of the rows are worked the same as for the tubular RAW netting (see instruction for **Creating additional rows of the tubular RAW netting**).

## Closing the end of tubular RAW netting

The way you close the end of the tubular RAW netting depends on whether or not the netting is created with equal top and bottom sides, which gives the netting a rectangular, even shape (as in the “Flowers and Lace” pattern), or if the netting has been decreased on the bottom side to create a cone-shaped netting (as in the “Rightly Sew” pattern).

### Closing a rectangular shape RAW Netting

**Warning:** When creating a rectangular shape tubular raw netting, the netting must have an even number of net holes and the net holes must be started at what will be the side of the beaded foundation (if the netting is attached to one).

1. Work the thread to the bottom of the net hole at the **edge** of the netting.
2. Complete half of the net holes ending at the edge on the opposite side. (If you have a total of ten net holes you would work five net holes on one side. It doesn't matter if you work the front or the back first).

**Warning:** When completing the net holes of the other half of the current row, you will be adding the beads for just one side and will be connecting those beads to the top and bottom beads of the corresponding net hole on the first half of the current row and to the side beads of the previous net hole.

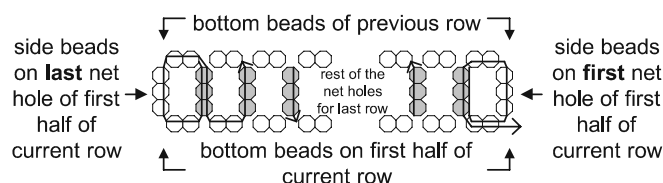


Fig. 16

3. On the next net hole (which will be the first net hole on the front) use the bottom beads of the previous row and the side and bottom beads of the just completed net hole. You will add only 3 beads to complete the side of the net hole. In Figure 16, the white beads indicate the bottom beads of the previous row and the beads of the net holes on the first half of the current row. The gray beads are the ones that will be added while attaching the back side to the front side (or visa versa). Figure 17 shows a closeup

of the first two net holes on the second half of the last row. In the sample your thread is extending from the bottom beads of the previous row. Pick up the side beads (3), bring the needle through the bottom beads and side beads of the corresponding net hole on the first half of the current row. Bring the back through the bottom beads of the previous row and down the newly added side beads. Bring the needle into the bottom beads of the corresponding net hole on the first half of the current row, pick up the side beads (3) and bring the needle through the bottom beads of the previous row.

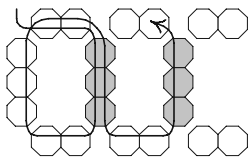


Fig. 17

8. Continue working in a Figure-8 fashion, adding only the side beads of the new net holes until you get to the very last net hole. **NO NEW BEADS ARE ADDED** on the very last net hole, but be sure to complete the Figure-8 in order to position the beads in the proper place.

**Warning:** In Figures 16 and 17, the diagrams show the thread extending from the top of the just completed net hole at the edge of the piece, if the thread is extending from the bottom of the net hole you would work the Figure-8 in the opposite direction, again adding just the side beads.

### ***Closing a cone shape RAW Netting***

Work the RAW netting until the net holes have been decreased to 1 x 1 dimensions. At this point work the thread to the bottom bead of the nearest net hole, pick up one bead and go through the bottom bead of the next net hole (Fig. 18). Continue around, adding a bead between each bottom net hole bead. At this point you can start doing the tubular peyote stitch, decreasing it in an irregular manner, until you have three to four beads. At this point, circle the beads, forming a uniform closure at the bottom of the netting. (Refer to the **Basic Instructions for the Peyote Stitch** for additional information on decreasing the tubular peyote).

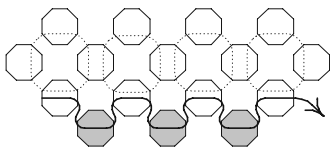


Fig. 18

## ☺ Helpful Hints

### Some Things to Remember When Creating RAW Netting

- If the RAW netting is attached to a beaded foundation, always start the net holes at the very side of the beaded foundation.
- To create an even, square-looking net hole, always pull the thread through each side of the net holes individually. If you pull the thread around the corner, the netting will be somewhat skewed and ragged looking.
- If creating a cone shaped netting, do not decrease the bottom side of the netting too rapidly. If you do, the netting will be stubby and uneven looking. After a decrease row (for example, decreasing a 4 x 4 to a 4 x 3 x 3) do at least two more rows (3 x 3) before decreasing again (to a 3 x 2 x 2).
- If using a beaded foundation with the RAW netting I recommend the foundation be created using Delicas, as they have a very regular shape which will help maintain the square look of the net holes.
- When securing or attaching new thread within the RAW netting, bring the needle through all four sides of a net hole at least once to secure.
- The RAW netting can be worked with small or large (3 and 4 mm) beads, however, I do not recommend using crystals as they tend to cut the thread.